

SAFE PRACTICES FOR TRAFFIC INCIDENT RESPONDERS

HWS020

Traffic incident responders frequently fall victim to "secondary incidents" that occur as they attend to the original incident. The "quick clearance" of traffic incidents is one of the most effective ways to minimize their negative impact. Quick clearance at known "high accident" locations can be enhanced by pre-incident planning that targets the rapid removal of an incident. These plans require a coordinated effort of all responders — including police, fire, EMS, public works and private towing companies.

The Texas Engineering Extension Service (TEEX) has developed this course to train on-scene traffic responders — law enforcement, fire and rescue, emergency medical services (EMS), and public works traffic control personnel — in safe procedures for accomplishing their tasks in and near traffic. The course is led by instructors from the fire services, law enforcement, and traffic control disciplines, and is presented at no charge to Texas city and county employees. TEEX conducts the course in conjunction with the Texas Department of Transportation (TxDOT) and the National Highway Traffic Safety Administration (NHTSA).

Length: 8 hours

Fee: No charge to Texas city and county participants.

Topics:

- Basic traffic incident management definitions, standards and guidelines
- Multiple agency planning for occurrences of traffic incidents on the road system
- Benefits of quick clearance from the roadway
- Safe parking at the traffic incident
- Initiation of appropriate temporary traffic control
- Use of emergency vehicle lights at night

Audience:

Law enforcement, fire and rescue, emergency medical services (EMS) and traffic control personnel.

Prerequisites:

None

**Classes are filling up fast! Don't delay! Schedule before Sept. 1.
To schedule this class in your area, call **866-878-8900**.**



For more information or to register, contact:

TEXAS ENGINEERING EXTENSION SERVICE

Emergency Services Training Institute

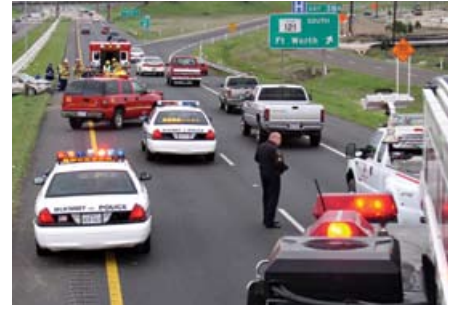
College Station, TX 77840-7896

(866)878-8900

esti@teexmail.tamu.edu

www.teex.org/esti

C07.1655.03.07



SAFE PRACTICES FOR TRAFFIC INCIDENT RESPONDERS

HWS020

www.teex.org/esti

A Member of The Texas A&M University System

